

Western IPM Center

 **University of California**
Agriculture and Natural Resources



United States
Department of
Agriculture

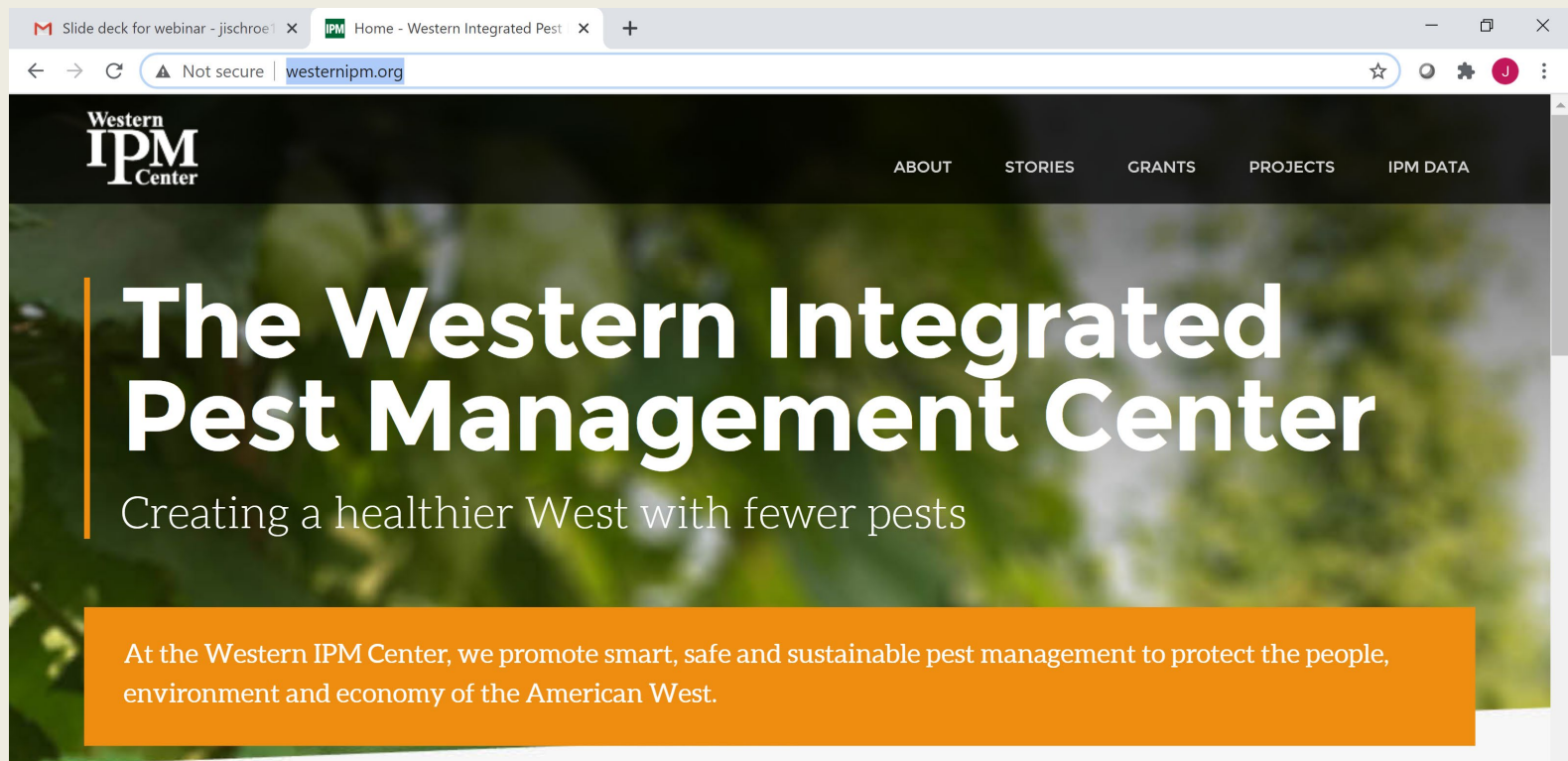
National Institute
of Food and
Agriculture

**Applications are due by 5 p.m.
PST, Friday, December 8, 2023**

Questions? contact Jill Schroeder at
jischroe1@gmail.com

Request for Applications

- Where can I find the RFA?
 - Western IPM Center October or November Newsletter
 - <http://westernipm.org/>



Key items to consider and address

- WIPM Center regional priorities
- Stakeholder priorities
- Stakeholder engagement – who is your audience?

Center Regional priorities

- IPM tools to address invasive, resistant or emerging pest problems
- Pest issues identified as Center priorities by stakeholder groups in the West
 - *listed on page 2 of the RFA*
 - <http://westernipm.org/index.cfm/center-grants/priorities/>
- *Note: need to discuss in proposal narrative; not just list in application form.*

Stakeholder priorities

- Pest management strategic plans
 - <https://ipmdata.ipmcenters.org/>
- Recommendations from Western Extension, Research and Academic (WERA) groups
 - *National Information Management & Support System (NIMSS) available at www.nimss.org*
- Reports published by stakeholder groups such as commodity boards
- Letters of support from stakeholders



ABOUT

STORIES

GRANTS

PROJECTS

IPM DATA

Home / IPM Data / PMSPs and Crop Profiles

Project Reports

Information Request Replies

Pesticide Use Data

Pesticide Label Data

PMSPs and Crop Profiles

SEARCH

For the latest IPM news and funding announcements, subscribe to our monthly newsletter.

SUBSCRIBE

PMSPS AND CROP PROFILES

Pest Management Strategic Plans

Pest Management Strategic Plans document current pest-management issues and practices in a particular crop, and set priorities for research, regulation and education. They are developed by groups representing growers, commodity associations, researchers, crop consultants and others.

Most PMSPs focus on a single commodity in a particular region and use a pest-by-pest approach to document current management practices and those under development. PMSPs for non-agricultural settings address the unique pest management conditions and challenges of the setting.

[Pest Management Strategic Plans](#) – This alphabetical list is also keyword searchable.

Crop Profiles

Crop Profiles are snapshots of crop production practices for agricultural commodities.

[Crop Profiles](#) – Searchable by region, crop or state.

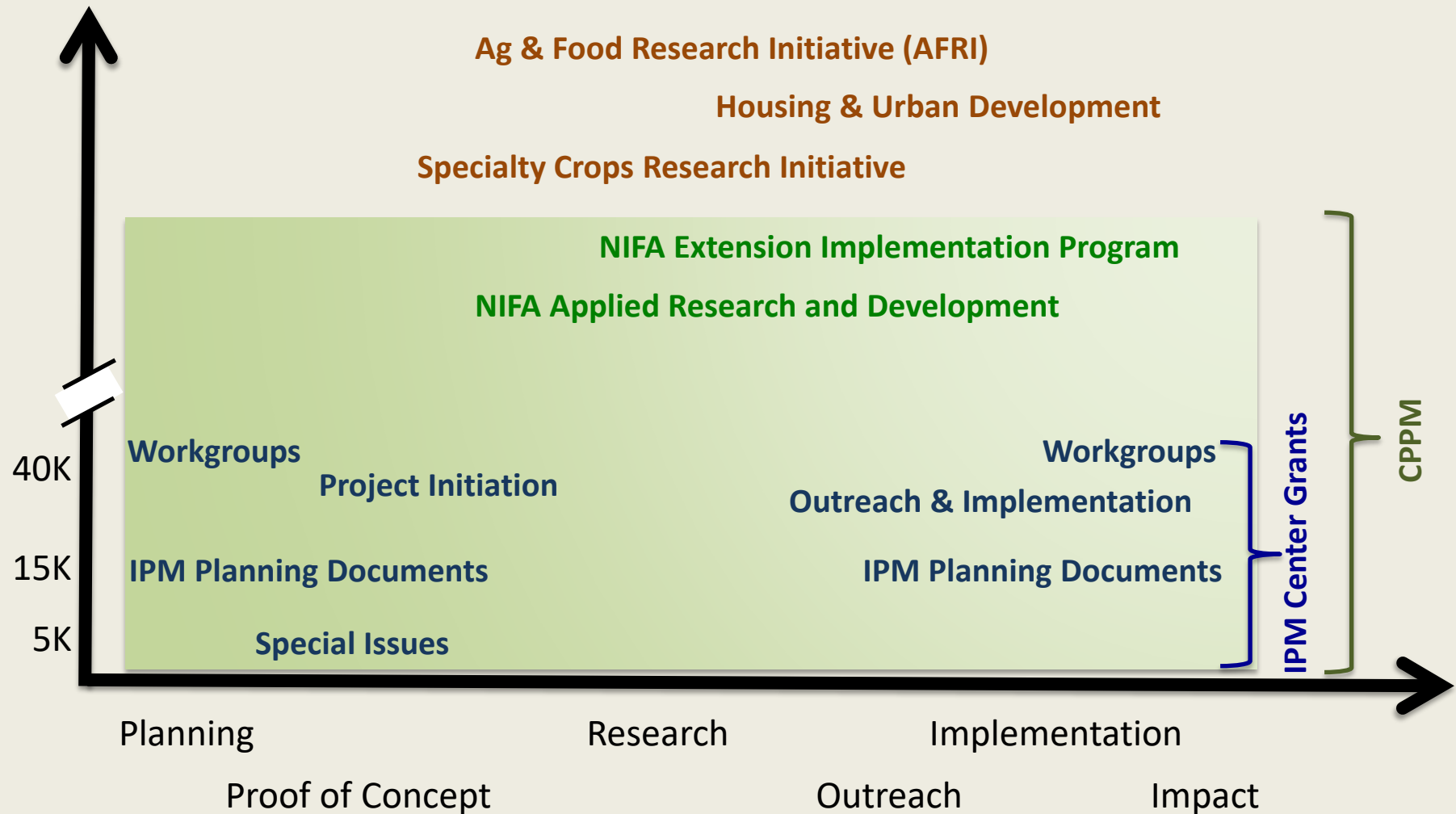
Stakeholder Engagement

- Describe in proposal narrative
 - Who is your audience?
- Provide letters of support from key stakeholders
 - Documents priorities/need
 - Documents engagement

Three (3) grant types (\$40,000 budget maximum per proposal)

- Grant types – *see p. 4 of RFA for descriptions*
 - Project Initiation
 - IPM Workgroups
 - Outreach and Implementation
- Proposal timeline
 - 1 year projects
 - Start date March 1, 2024; end date February 29, 2025
- All three types are scored together

How the different grant categories fit into an overall program



Proposals must demonstrate regional scope

- The Center grant program seeks to support collaboration among states, islands, territories and First Nations
 - projects should have participants from multiple states, islands, or First Nations [can be a state and a tribe within that state]
 - or clearly demonstrate that the project will have regional benefit
- Exceptions are allowed only when the project director can document that the host/pest combination occurs only in one state

Proposal Score Sheet

- See *page 5* of RFA for score sheet
 - Reviewers will refer to this score sheet to find scoring criteria for each proposal type and guide their reviews.

Proposal Score Sheet

- Preparation (10 pts)
 - Information is clearly presented
 - Meets all format requirements and all forms are included

Proposal Score Sheet

- Problem & Justification (20 pts)
 - How big of a problem is this for the REGION?
 - Is the project type identified?
 - How will the project address the Center priorities (*p. 2 RFA*)?
 - Have the Pis documented the stakeholder priorities and needs – are they working with these stakeholders?
 - How will the project integrate into your overall IPM program and goals?

Proposal Score Sheet

- Potential for success (25 pts)
 - Criteria vary by project category (*p. 5 RFA*)
 - Objectives outline a logical solution to the problem
 - Procedures/plans are linked to the objectives and are likely to address the problem.
 - Timeline seems reasonable for outputs and outcomes – can the project be successfully accomplished within the 1 year funding cycle?

Proposal Score Sheet

- Underserved stakeholders (10 points)
 - Does the project engage with and serve needs of historically underserved stakeholders?
 - Project leads are from one of these groups OR project involves members of this community.
 - Will this project include groups not typically engaged with or who are not practicing IPM?
 - This includes limited resource and socially disadvantaged farmers/ranchers/landowners, and EPSCoR states.

Proposal Score Sheet

- Underserved stakeholders (10 points)
 - Projects that are designed by or document connection with underserved groups will be credited in this category.
 - Explain how you identify yourself or the population you are working with as underserved?
 - Resources
 - RFA *p. 5*
 - Biden Executive Order On Advancing Racial Equity and Support for Underserved Communities Through the Federal Government
 - Section 2 provides further definitions to help you determine how you or your stakeholders fit

Rubric for Underserved Stakeholder Engagement (*p. 6 RFA*)

	Clearly Identified	Can be inferred	Not addressed
Stakeholder group(s)	2	1	0
Stakeholder participation*	2	1	0
Resources or effort directed to stakeholders	2	1	0
Stakeholder letters of support**	2	1	0
Stakeholders are traditionally underserved***	2	1	0
*Stakeholders are listed as collaborators or key personnel			
**Letters of support on organization letterhead – 2 pts; email correspondence -1 pt, none – 0 pts			
***Underserved communities or persons those w/ limited participation in USDA programs, EPSCoR states and socially disadvantaged groups			

This rubric will be used by the reviewers to determine the number of points (up to 10) awarded for the underserved criterion.

See <https://www.nifa.usda.gov/history-usda-epscor-states> to determine if your state is an EPSCoR designated state.

Proposal Score Sheet

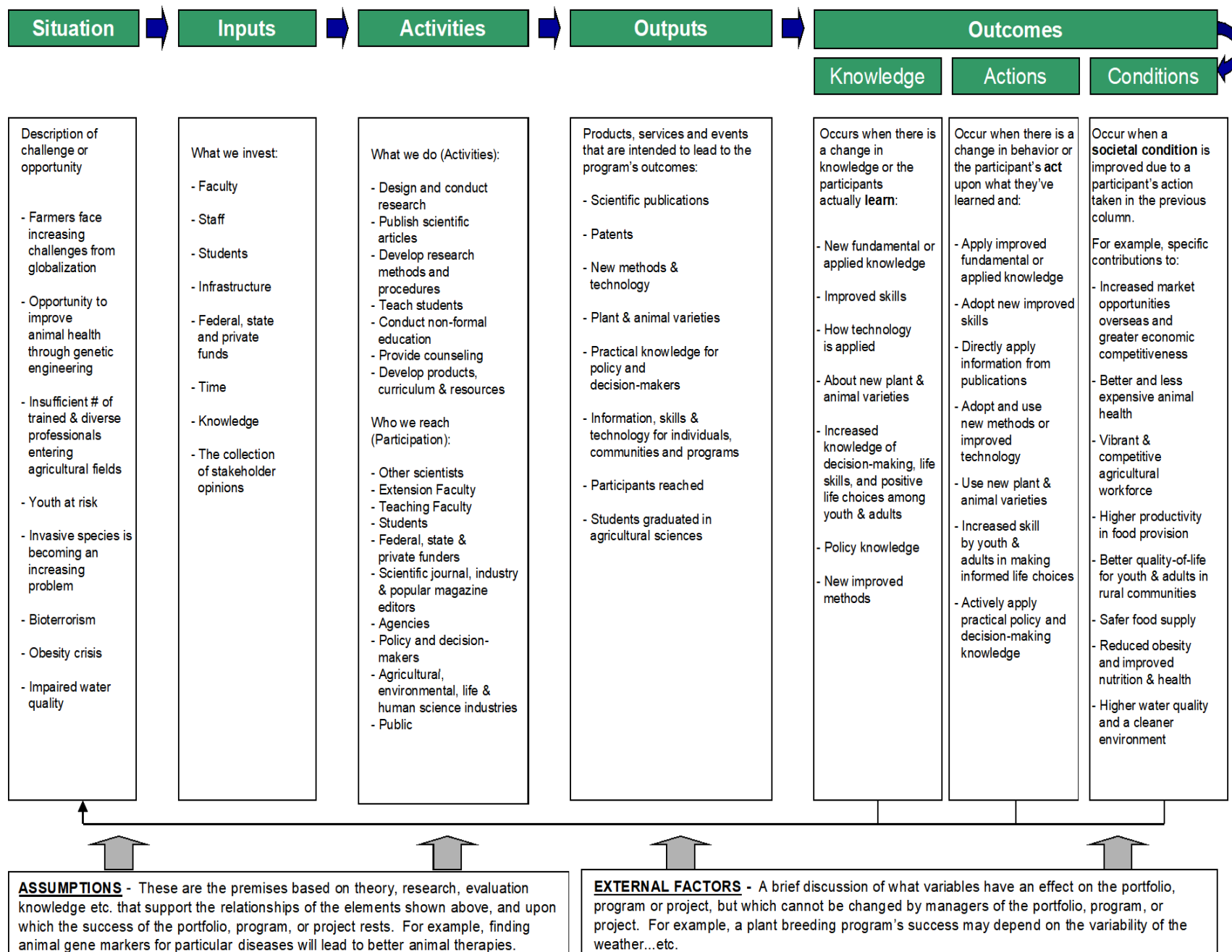
- Outputs and Outcomes (15 pts)
 - Outputs – what will the project produce?
 - link to objectives
 - Who is(are) the target audience(s)
 - Outcomes are the changes that may be influenced by the outputs.
 - Collect data to document change in knowledge, behavior, or condition OR collect baseline data to later evaluate change in knowledge, behavior or condition
 - Outcomes relate to WIPM Center priorities

Proposal Score Sheet

- Outputs and Outcomes (15 pts)
 - Logic Model is an excellent tool to demonstrate the connection between different project pieces (<https://logicmodels.ipmcenters.org/>)
 - Generic model for NIFA reporting <https://www.nifa.usda.gov/sites/default/files/resource/Generic%20Logic%20Model%20for%20NIFA%20Reporting.pdf>
 - The program does NOT require that you include a logic model in your proposal.

Generic Logic Model for NIFA Reporting

(This model is intended to be illustrative guide for reporting on NIFA-funded research, education and extension activities. It is not a comprehensive inventory of our programs.)



Proposal Score Sheet

- Expertise and participation (15 points)
 - Biosketches (**3 page maximum**) for project directors and co-project directors
 - Project should involve end-users and students as appropriate
 - Describe how stakeholders will be involved

Proposal Score Sheet

- Budget (5 points)
 - Budget is well defined
 - Costs are reasonable for the proposed project
 - Budget narrative fully justifies the budget items.
 - Narrative follows the order of the budget form

Supporting documents

- Tables and figures to support Problem statement (not required)
 - If included, reference these in the text
- Letters of support
 - Collaborator letters of intent or statements of work
 - Stakeholder letters of support
- Progress report for Workgroup renewal applications.

THINGS TO KEEP IN MIND

- Read the request for proposals carefully
- Projects should be regional in scope
- Think about/describe how this proposal fits into your long-term plan for the project or IPM program
- How does this proposal address priorities of the WIPM Center?
- Does the proposal address stakeholder priorities and document engagement with stakeholders?

Key items

- How to access submission site to register
 - <https://grants.ipmcenters.org/>
 - This link can be found in the RFA
- Tutorials for submission site are found at
 - <https://www.youtube.com/playlist?list=PLbGDFwpS4sk7LMIQjLNlcFCajhsj9WVwR>
- Tips from successful grant writers:
WSWS IPM Hour Episode 27: Western IPM Center New Grant Applicant Overview and Q&A
<http://westernipm.org/index.cfm/about-the-center/publications/the-ipm-hour/>

Key items

- Forms are available to download for administrative sections – complete each form in full and upload as PDF files
 - Grant application form
 - Needs to be signed by the Authorized Organizational Representative
 - Conflict of Interest List for PD and co-PDs
 - Current and Pending Support for PD and co-PDs
- All information for the narrative will be filled into form fields directly or by cut-and-paste.

**Applications are due by 5 p.m.
PST, Friday, December 8, 2023**

Questions? contact Jill Schroeder at
jischroe1@gmail.com

Questions?

Grant Management System

- Applicants must register at <https://grants.ipmcenters.org/>