

San Diego Feral Pig Eradication

<http://www.aphis.usda.gov/ws/ca>

if it's hip, it's here

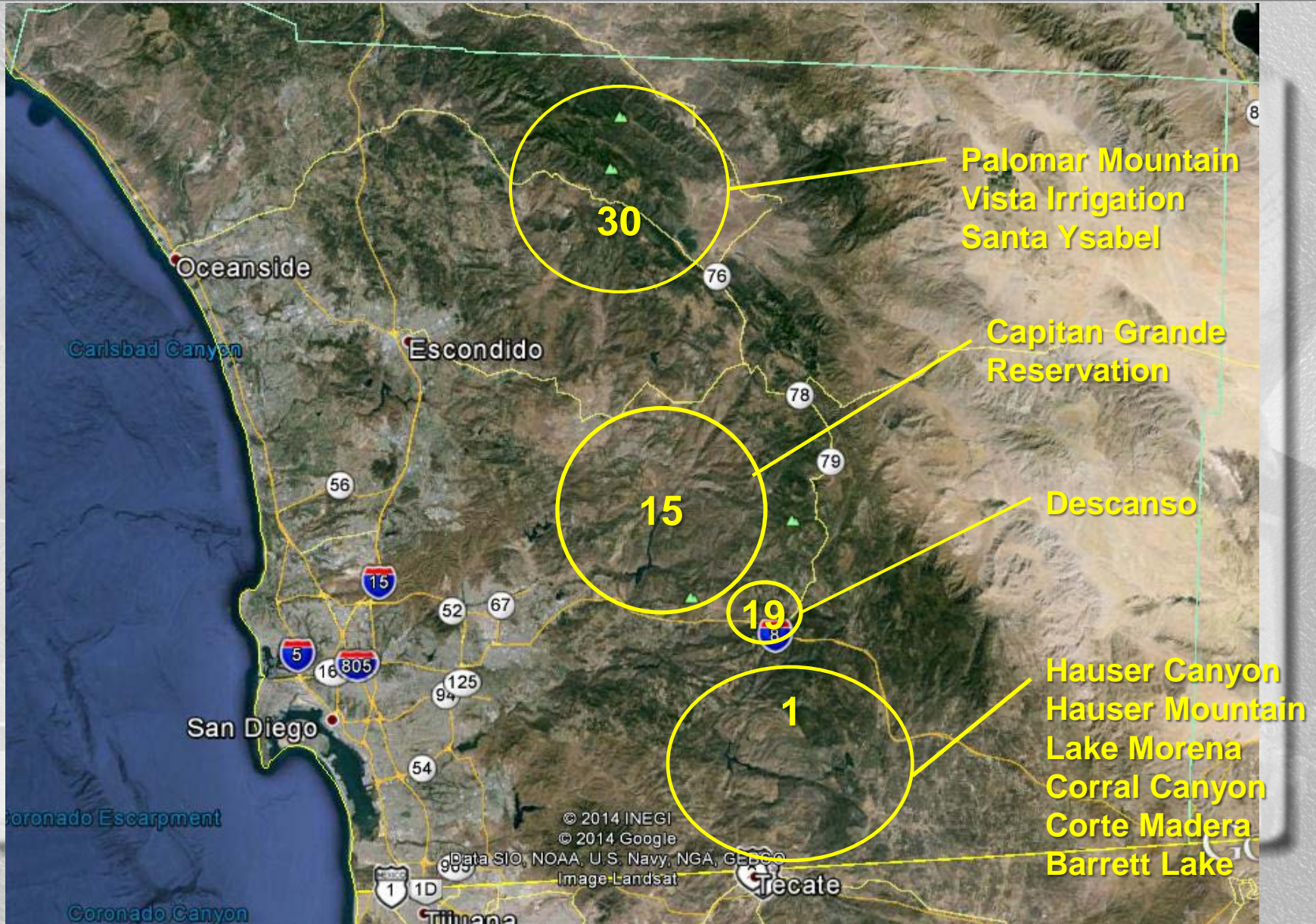


W Wildlife
Services

Protecting People | Protecting Agriculture | Protecting Wildlife

Removal Locations (2010-June, 2014)

<http://www.aphis.usda.gov/ws/ca>



Goals, Objectives, Requirements

<http://www.aphis.usda.gov/ws/ca>

- Eradication of feral pigs from San Diego County
- Document damage caused by feral pigs in San Diego County.
- Access to properties and permission to use all necessary tools and methods.
- Cooperation and accountability with other agencies and entities that are removing or monitoring pigs on their property.
- Collect samples for disease and DNA analysis (blood, liver, kidney, hair, muscle tissue)



Budget

<http://www.aphis.usda.gov/ws/ca>

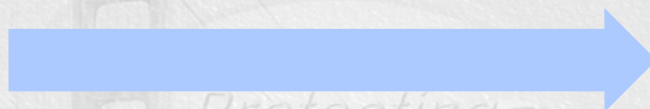
- Funds from Forest Service, SANDAG, and APHIS.
- Support five employees (Four Technicians, one Supervisor).
- Equipment costs most significant for the first six months.



Top Secret Plan

<http://www.aphis.usda.gov/ws/ca>

Find
pigs



Kill
pigs



Damage

<http://www.aphis.usda.gov/ws/ca>



**W Wildlife
S Services**

Protecting People | Protecting Agriculture | Protecting Wildlife

Damage

<http://www.aphis.usda.gov/ws/ca>



MOULTRIE



51°F

BLM17

15 MAY 2015 04:56 pm

W Wildlife
Services

Protecting People | Protecting Agriculture | Protecting Wildlife

Damage

<http://www.aphis.usda.gov/ws/ca>



MOULTRIE



55°F

BLM17

15 MAY 2015 05:24 pm

W Wildlife
Services

Protecting People | Protecting Agriculture | Protecting Wildlife

Tools and Methods

<http://www.aphis.usda.gov/ws/ca>

- Trail cameras and baiting
- Traps (cage, corral, snares)
- Shooting
- Night vision, thermal equipment
- Maps, GPS, GIS software
- Online research, webpages
- Dogs
- Fixed wing aerial hunting
- Helicopter aerial hunting (turbine)



Trail Cameras and Baiting

<http://www.aphis.usda.gov/ws/ca>

- Monitor for activity at bait holes, water sources, trap locations, and rooting activity
- Lock boxes on public land
- 270 locations and currently 150-175 active
- Bait-corn, water, yeast, kool-aid mix



Cage Traps

<http://www.aphis.usda.gov/ws/ca>

- 4'x3'x8'
- Simple trigger device
- Single or small numbers of pigs



Corral Traps

<http://www.aphis.usda.gov/ws/ca>

- Possible to catch large numbers at one time
- Customize size and configuration
- Different door designs and trigger devices
- Requires two people in most situations
- 6'x5' panels
- 7-10 panels



Night Vision/Thermal and Shooting

<http://www.aphis.usda.gov/ws/ca>

- Target trap shy pigs
- Suppressor compatible
- Areas with limited access to transport traps
- Monitor bait piles with cameras for consistent activity
- Ground blinds or tripods
- Two people (spotter/shooter)
- Least cost effective and time consuming if unsuccessful...very frustrating!



Snare

<http://www.aphis.usda.gov/ws/ca>

- Remote areas with thick vegetation
- Trail cameras to monitor for non-targets
- Neck and foot snares
- Adjustable to minimize non-targets
- Private property with no pets or people present
- Last resort if other options have been extinguished or unsuccessful



Dogs

<http://www.aphis.usda.gov/ws/ca>

- Requires a very experienced houndsman and well trained dogs.
- Target individual pigs in specific locations.
- Requires a “hot” track to decrease chase time.
- Pigs are tracked and cornered
- Dispatched with firearm.
- Two WS Specialist from TX (March)
- GPS tracking collars on all dogs



Components

<http://www.aphis.usda.gov/ws/ca>

Property	Hours	Camera Nights	Corral Trap Nights	Cage Trap Nights	Snare Nights
Forest Service	5,565	16,601	201	542	200
BLM	1,118	2,391	279	26	0
City Watershed	364	1,765	0	0	6
County Parks	209	1,348	0	0	0
Private	1,356	4,092	36	79	4
Total	8,612	26,197	516	647	210

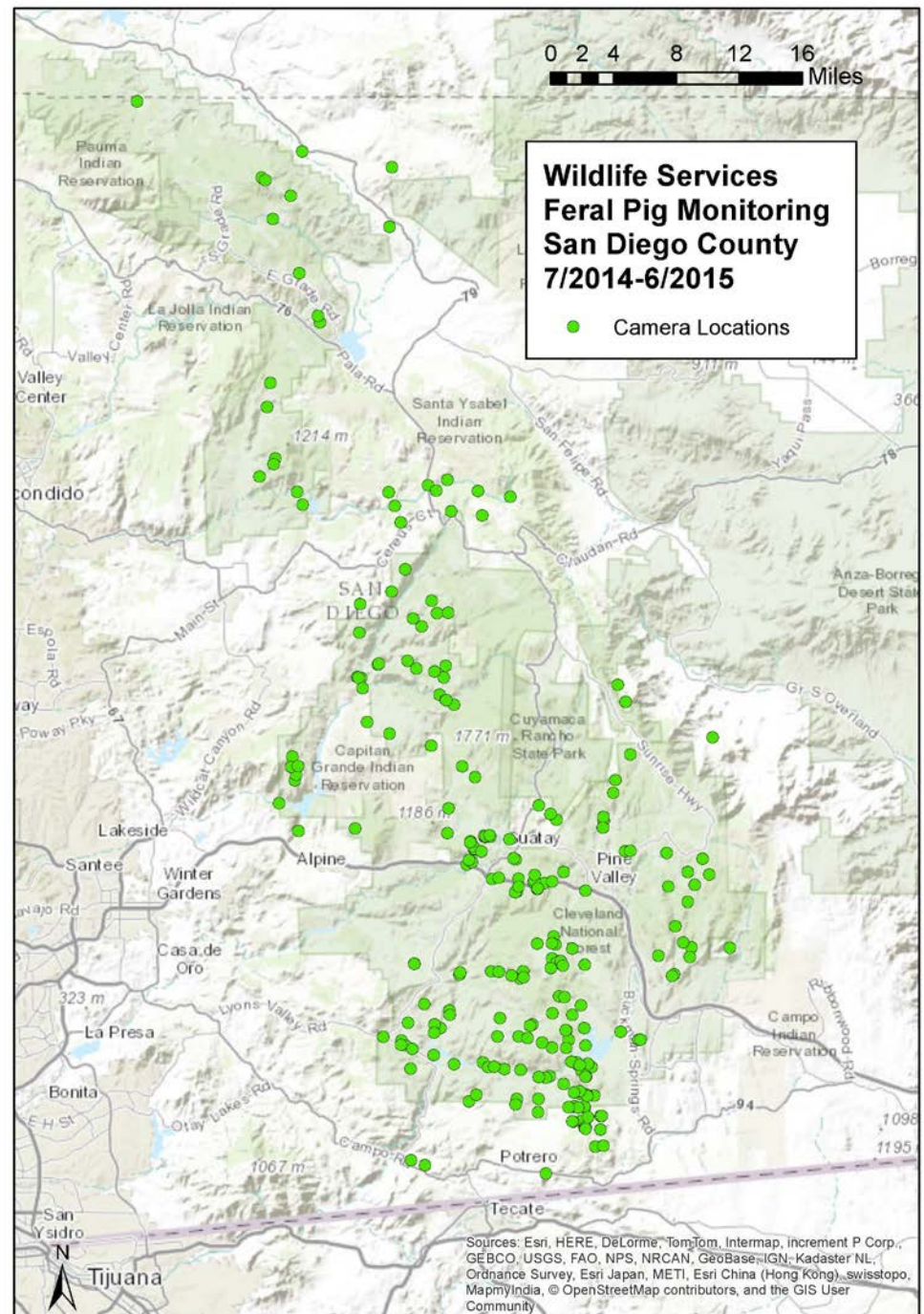
Removal Methods

<http://www.aphis.usda.gov/ws/ca>

Method	Take
Cage Traps	6
Corral Traps	26
Shooting	7
Spotlight	0
Night Vision/Thermal	3
Dogs	2
Snares	2
Total	46

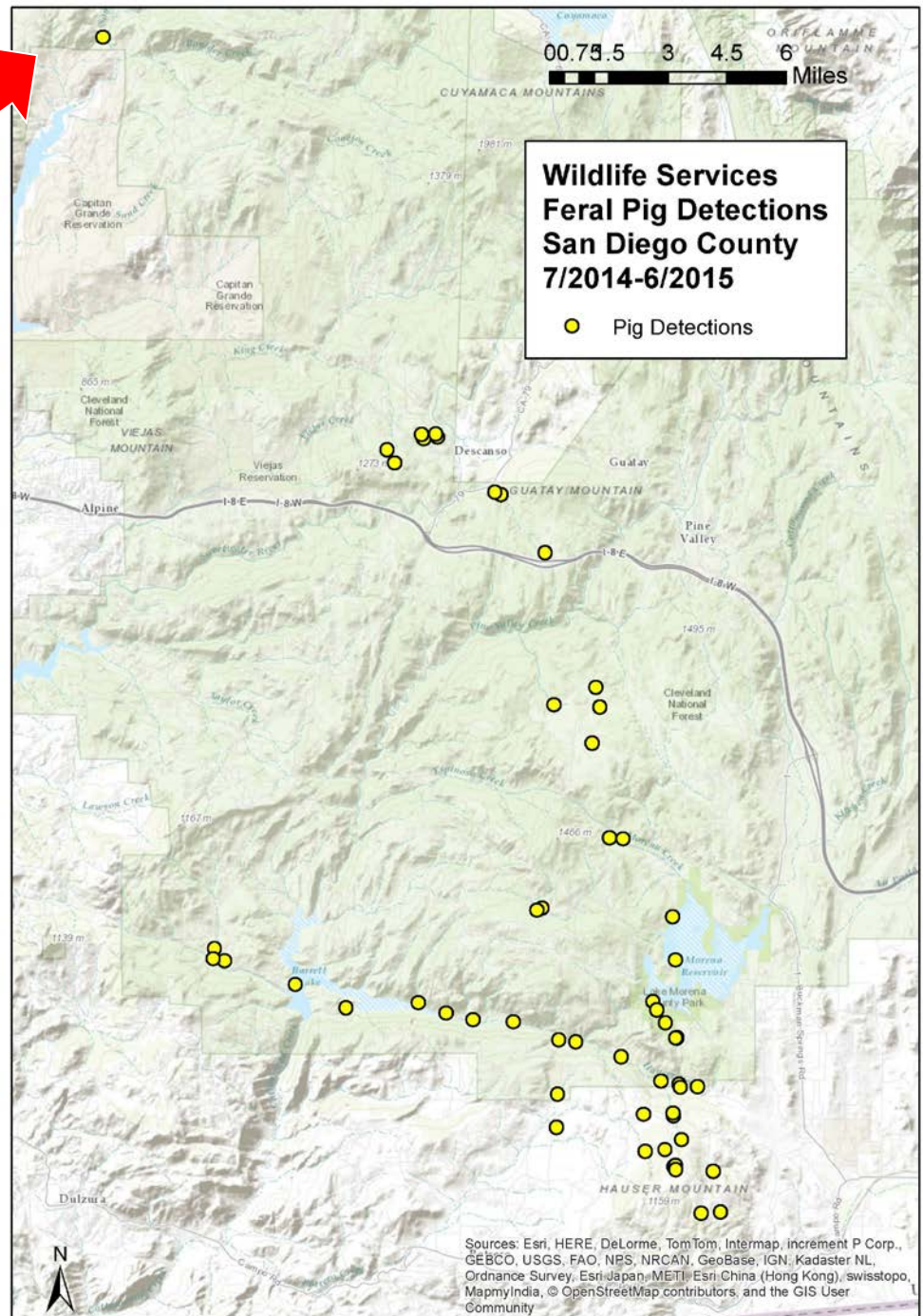
Camera Locations

- 270 different camera locations
- ~150 currently active



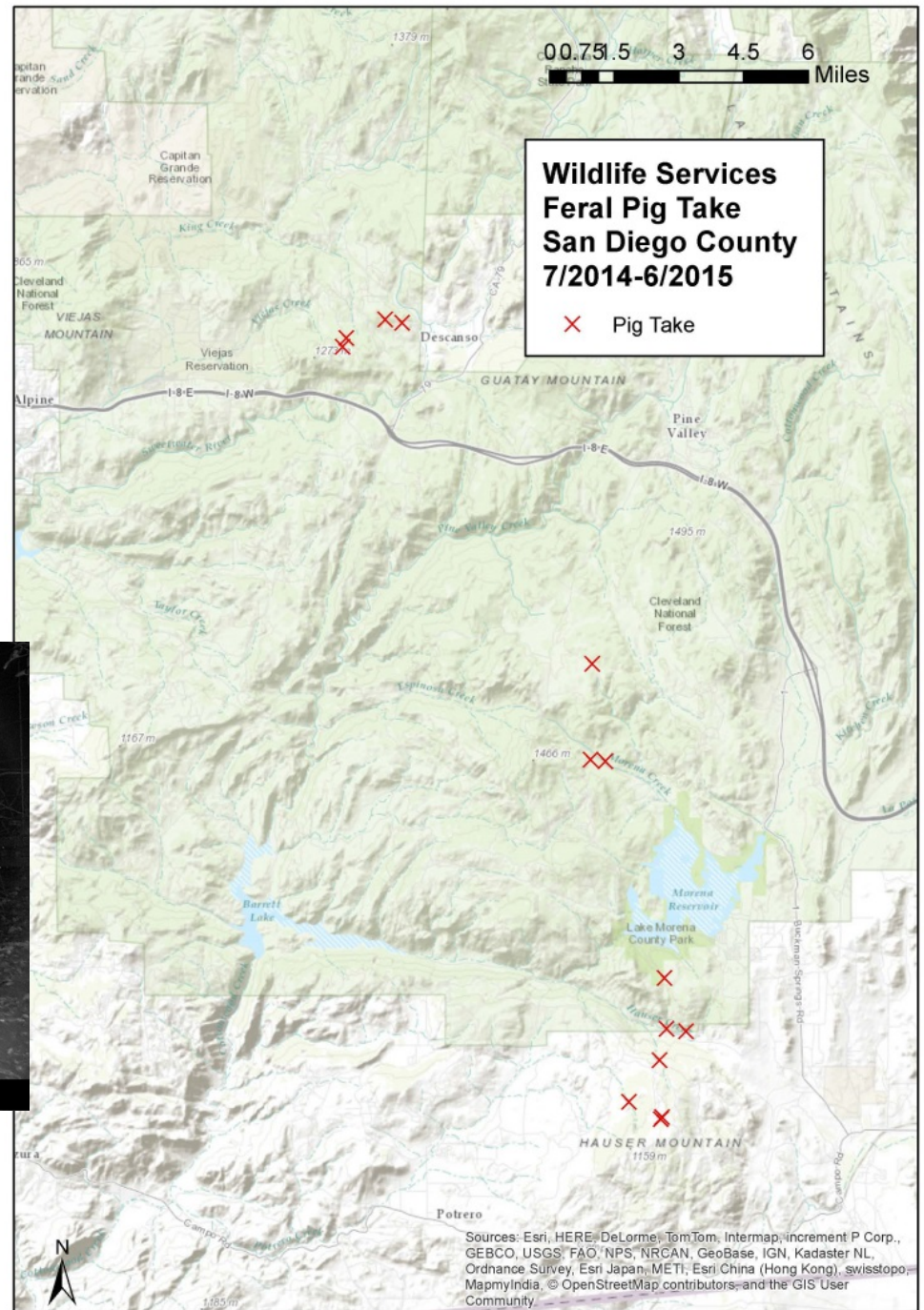
Pig Detections

- **One picture of one pig near El Capitan Reservation**



Pig Removal Locations

- Multiple pigs usually removed from the same locations

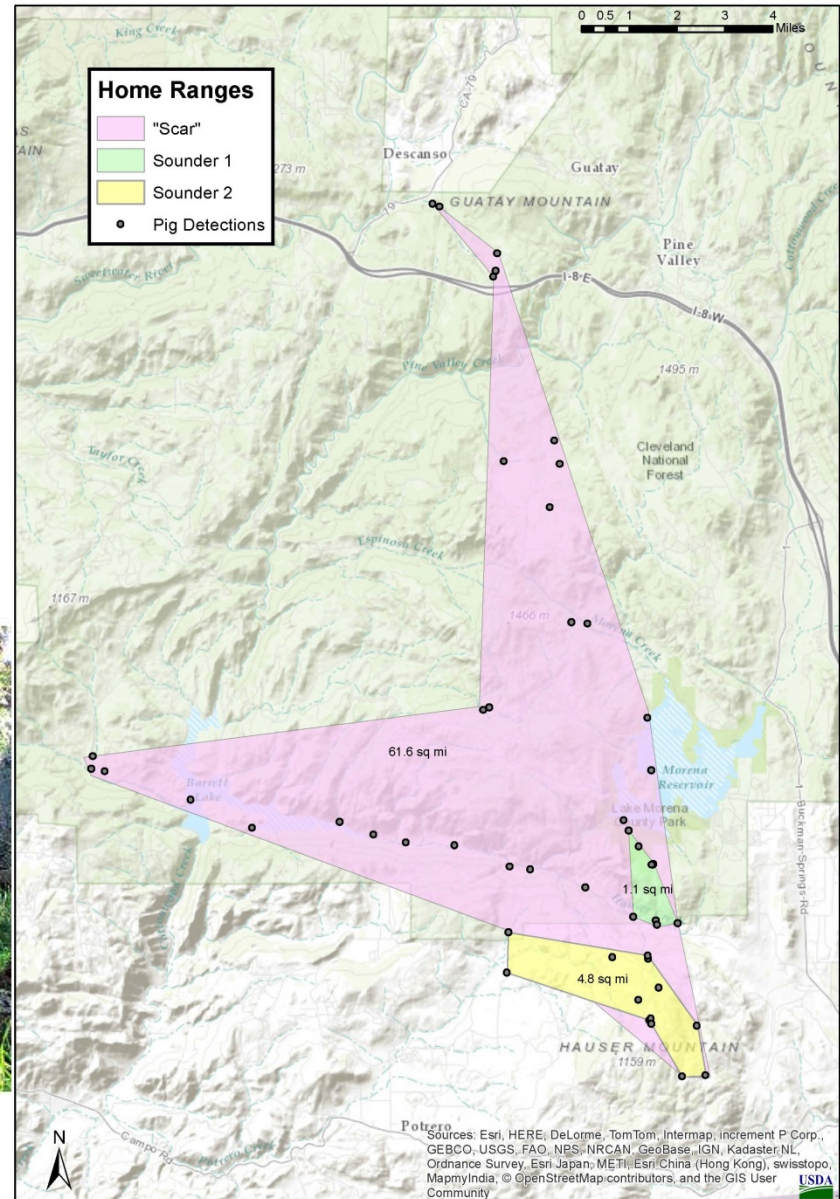


Home Range

<http://www.aphis.usda.gov/ws/ca>

- Boar's home range 30-61 square miles.
- Sounder or juvenile's home range 1-10 square miles.

"Scar"



WS

Protecting People | Protecting Aq

Population Structure

<http://www.aphis.usda.gov/ws/ca>

- 19 Male/27 Female
- 11 Adults/15 Juveniles/20 Piglets
- Average weight 80 lbs. (15lbs-400 lbs.)



Typical Sounder

<http://www.aphis.usda.gov/ws/ca>



MOULTRIE



59°F

MB02

18 JUL 2014 06:22 am

W Wildlife
Services

Protecting People | Protecting Agriculture | Protecting Wildlife

Corte Madera Ranch

<http://www.aphis.usda.gov/ws/ca>



11-08-2014 19:10:02

Wildlife
Services

Protecting People | Protecting Agriculture | Protecting Wildlife

Castrated Boar



Disease Monitoring

<http://www.aphis.usda.gov/ws/ca>

- Swine Brucellosis
- Pseudorabies
- Classical Swine Fever
- Porcine Reproductive and Respiratory Syndrome
- Toxoplasmosis
- Swine Influenza
- Leptospirosis



Conclusions

<http://www.aphis.usda.gov/ws/ca>

- One year ago population was estimated at 350-500, but probably closer to 1/3rd of that
- Recreational hunting not making a large impact on population.
- No pigs recorded in Palomar Mountains, Santa Ysabel, Laguna Mountains.
- High probability of three, possibly four, separate releases between 2000-2012.
- Adult boars have a large home range (50-60 square miles).

Future Plans

<http://www.aphis.usda.gov/ws/ca>

- Expand monitoring areas across county
- “Ms. Piggy” method for adult boars
- Judas pig
- Continue to collect genetic samples to investigate population connectivity
- Continue to find and kill pigs

Questions?

<http://www.aphis.usda.gov/ws/ca>

Huh?



*Protecting
Property*

W Wildlife
Services

Protecting People | Protecting Agriculture | Protecting Wildlife