

Insect Threats to Nevada Wildlands

October 29, 2014



Mormon Crickets and Grasshoppers



2014 Cumulative Grasshopper Survey



0 25 50 100 150 200
Miles

Data and map produced by the Nevada Department of Agriculture, Cooperative Agricultural Pest Survey (CAPS) program.
Coordinate System: World Mercator, WGS 1984
Date Created: August 21, 2014

2014 Mormon Cricket Cumulative



0 25 50 100 150 200
Miles

Data and map produced by the Nevada Department of Agriculture, Cooperative Agricultural Pest Survey (CAPS) program.
Coordinate System: World Mercator, WGS 1984
Date Created: August 21, 2014

Black Grass Bugs

Irbisia and *Labops*



Satin Moth

Leucoma salicis



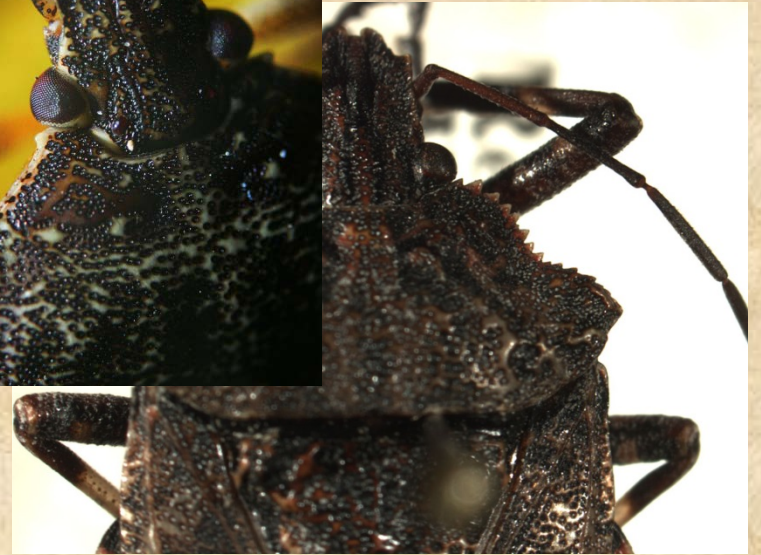
Sagebrush Defoliator

Aroga websteri

- Native insect
- Outbreaks are irregular and unpredictable
- 5-1000+ acres
- Probably very difficult to control
- Looked at as a biocontrol for sagebrush

Brown Marmorated Stink Bug

Halyomorpha halys



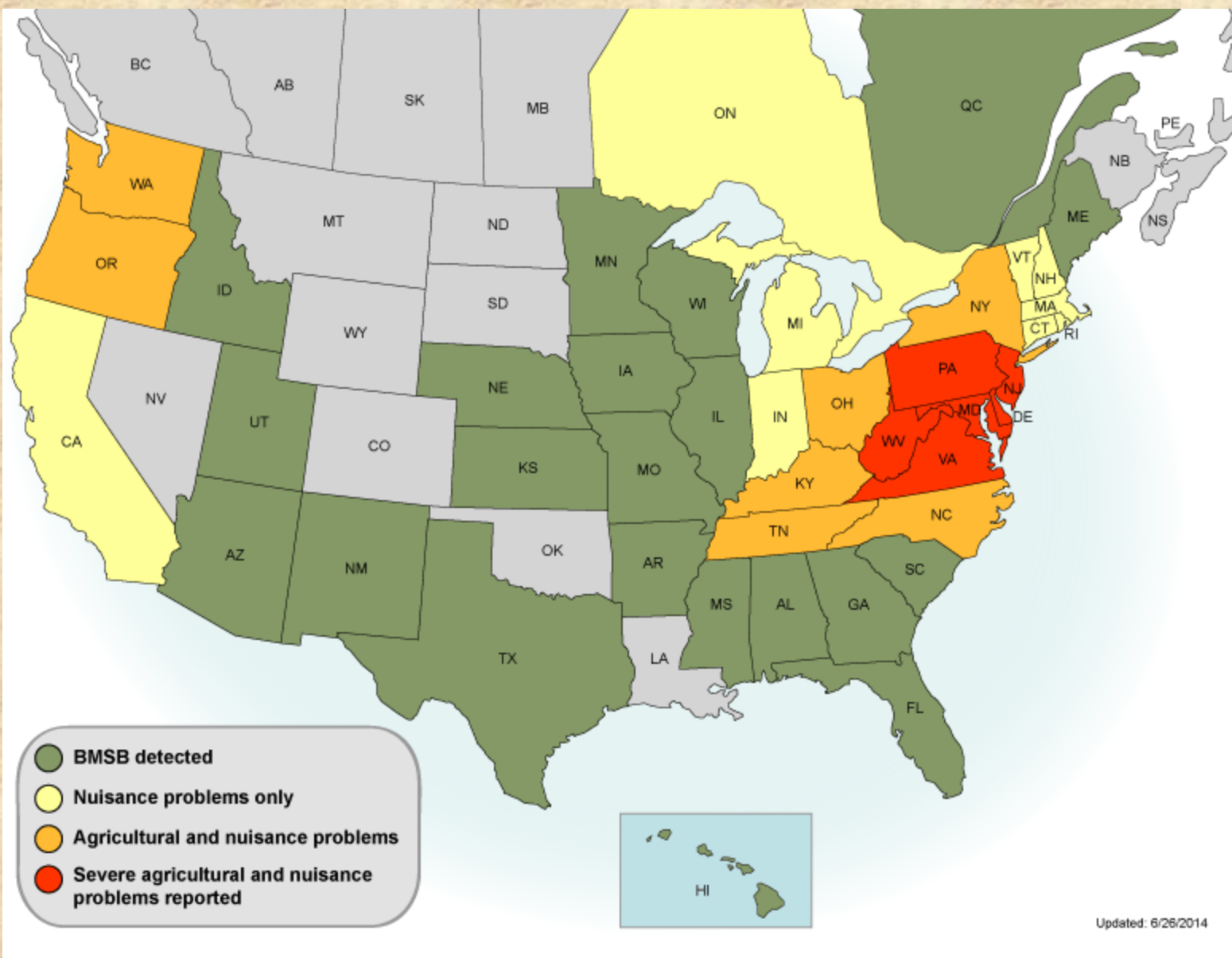




photo credit: Steve Jacobs

Pinyon Pine Issues

Pinyon Ips-Bark Beetle

Pinyon Needle Scale

Pinyon Sawfly

Jeff B. Knight

Nevada Department of Agriculture

405 S 21st St.

Sparks NV 89431

775.353.3767

jknight@agri.nv.gov



Nevada Department
of Agriculture